



# FRIDAY ROUND UP

8th December 2023



## ITS PANTO SEASON!

This week we saw the return of a trip that sadly had not been possible to run for a few years due to COVID and COVID recovery. On Tuesday the whole school went to the The Key Theatre in Peterborough to watch Aladdin. The school was a buzz with excitement on the day which increased as the younger children saw the 4 coaches pull up onto the school car park! The show was magical from start to finish. The children were completely captivated by the actors, lights and music. It was so lovely to see children dancing and joining in throughout. We always choose The Key Theatre as it is a smaller venue which means the children can all see the action close up and really feel part of it. Thank you to all the staff who volunteered their time on their days off to come and support this trip. The coach company, Kiddles, was also amazing, providing us with friendly and helpful drivers who not only got us there safely and with plenty of time to spare, but also arranged the pick up from the theatre so professionally. We are all looking forward to next year already!





# Parent Survey

The Governing Body at the school are keen to gather parents views on various areas across the school.

We appreciate that this year we have already asked for lots of feedback, but the Governors are keen to make sure that we have a set Parent View survey completed at the same time each year.

This will help them to support the Senior Leadership team in continuing to develop and improve the school and inform the strategic direction of the school.

Please take a moment to complete the online form. The link to the form is here:

[https://docs.google.com/forms/d/e/1FAIpQLScWt2QZzcuxGZDu3On\\_QxHjv0VD-Olvp3zPHt01gGjZ5g\\_rfw/viewform](https://docs.google.com/forms/d/e/1FAIpQLScWt2QZzcuxGZDu3On_QxHjv0VD-Olvp3zPHt01gGjZ5g_rfw/viewform)

# School meals

Thank you to everyone who was so understanding about the issues we have regarding being able to run a full kitchen service at the moment. It seems some of the difficulties may go on a little longer than we first thought.

We are doing all we can to ensure that we can provide meals, especially hot meals, to our families. However there may be some last minute menu changes in the final few weeks of term. We always aim to share these changes at the earliest opportunity. Please keep checking communications from the school to keep updated. Thanks again for your understanding.



# Hamper Raffle

Thank you for donations so far but we need a lot more to make the Hampers nice and full and something special to win. Please check at home to see if you have any of the following:



**Bottles of wine**

**Chocolates**

**Savoury snacks**

**Novelty toys and gifts**

**Christmas decorations**

**bubble bath / pamper gifts**



Please hand donations into the school office before Monday of the last week of term.

**Raffle tickets are on sale throughout December - £1 a strip.**

**The winning tickets will be pulled from the hat just after the Christingle service on the last day of term.**





# Mums and Dads Christmas Gift buying

**Monday 11th December**

Children will have the opportunity to purchase a small Christmas gift for mums, dads, step mums, step dads and main carers on **Monday 11th of December** in school. Children can bring in £3 for each gift and make their selection from the mobile Christmas shop that will be visiting each classroom. These will also be wrapped in school ready to take home and place under the tree.

**Please note that this 'shopping' opportunity will not be available for children to buy for siblings or extended members of the family and purchases will be limited to 4 gifts per child.**

**Money will be returned for gifts that are requested for these individuals. To avoid disappointment, please do not request them.**



## Christmas Dinner

This years Christmas Dinner is on Thursday **14th of December**. There is no need to pre-order. You can order on the day. **There will be no Blue option on that day.**

Children are welcome to wear **Christmas Jumpers** on the day



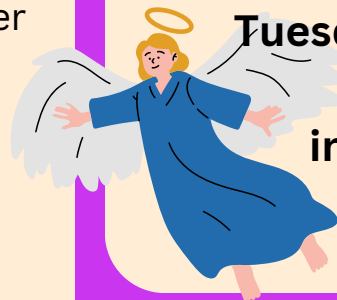
## EYFS /KS1 Nativity

Performances of the EYFS / KS1 Nativity are on:

**Monday 18th December  
at 2pm**

**Tuesday 19th December  
at 2pm**

**in the school hall**

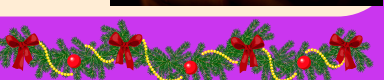


## Christingle

One of our most moving and beautiful services is the Christingle

This will be held at 9.15am on **Wednesday 20th of December** (the last day of term) in the school hall.

**All are welcome to join us for this very special service.**

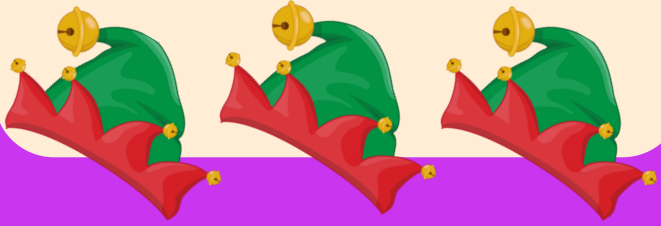




## PSFA CHRISTMAS HATS

Once again, the PSFA will be running their Christmas Hat treat giveaway.

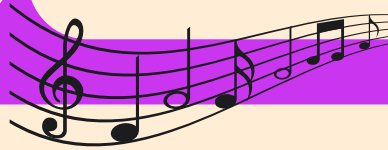
Starting Friday 1st December until the last day of school, the PFSA will be in the playground either at drop off or after school giving away small treats to the first 50 children.



## E SAFETY TIPS: E SAFETY CONVERSATIONS

The National Online Safety website contains excellent advice for all areas of e-safety. They suggest that the following questions could help you to start a conversation with your child about safe Internet use.

- What apps/ games are you using at the moment?
- How does this game/ app work? Can I play it with you?
- Which websites do you enjoy using and why?
- Do you have any online friends?
- Do you know where to go for help?
- Do you know what your personal information is?
- Do you know your limits?



# Rocksteady concert

Friday 15th December  
2pm in the Hall

## SEND HINTS AND TIPS FROM MISS TAVENDER



Leanne Martin posted this interesting snippet on her December newsletter.



### Parenting Top Tip

Christmas can be a challenging time for families. Before dealing with the parenting difficulties that come along, don't forget to check in with how you are feeling yourself. If you are not feeling great, you will not be able to deliver your best in the way you respond to your children. Plan in time for self-care. This will not only benefit you but your whole family too.

To read more see the school notice board



SELF-CARE



SEND IS EVERYONE'S BUSINESS

## REMINDERS

- Friday 8th December - Christmas Fayre in the Hall 3.45pm
- Monday 11th December - Mums and dads Christmas gifts
- Thursday 14th December - Christmas Dinner
- Friday 15th December - Rocksteady Concert - 2pm School Hall.
- Monday 18th / Tuesday 19th - EYFS &KS1 Nativity 2pm in hall.
- Wednesday 20th December 9.15am - Christingle service - Hall

